

# Unismart Mini 2 Operation Guide V1.0

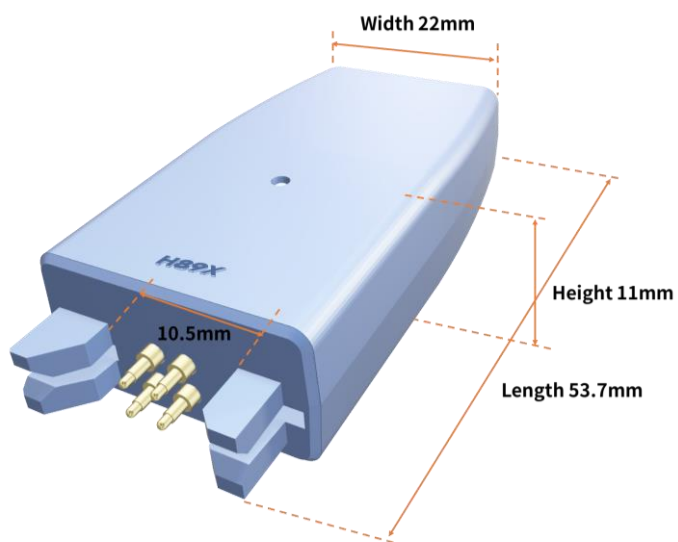
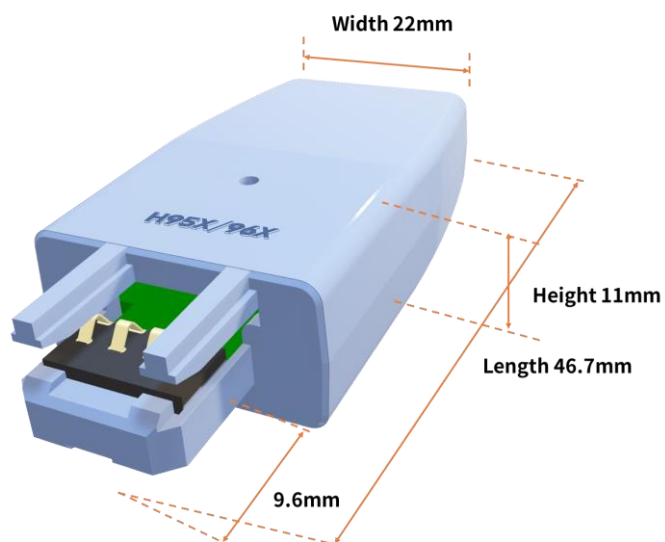
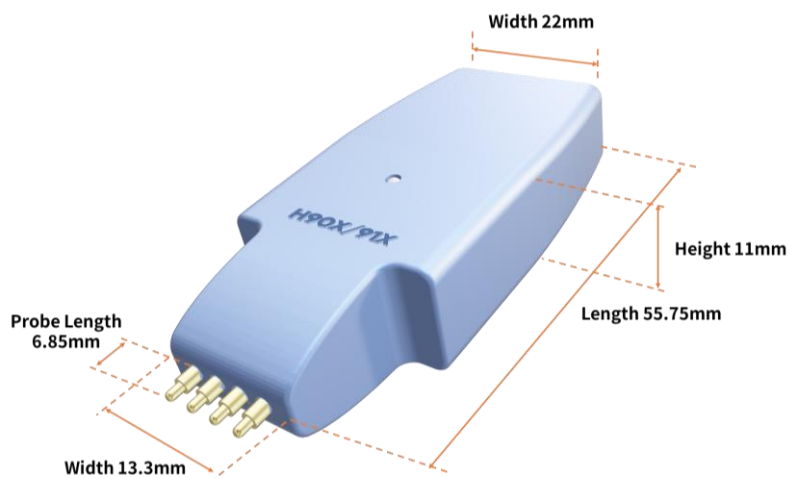
## Contents

1. Product Specifications.....	2
2. Overview .....	3
3. Usage Precautions .....	7
4. After-Sales Service .....	7
5. Disclaimer .....	8
Appendix I: Product List .....	8



# Unismart Mini 2 Operation Guide

## 1. Product Specifications

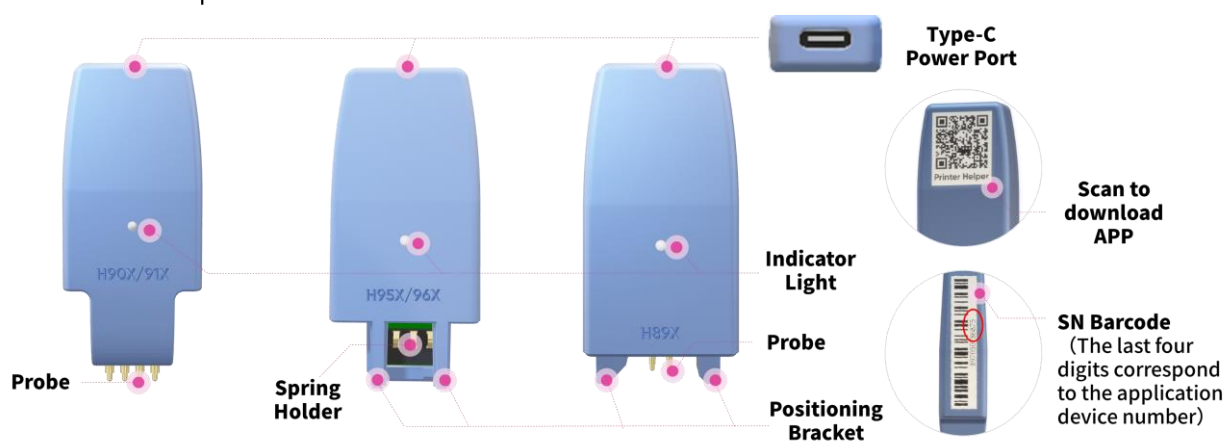


# Unismart Mini 2 Operation Guide

Specifications		Packing List	
Transmission	USB 2.0 (Type-C)	Unismart Mini 2 Device	1
	Wireless Communication BT 5.2	Power Cable (Type-C)	1
Power Interface	Type-C	CPE Packaging Bag	1
Power	DC5V/ 100mA, 0.5W	User Manual (Scan the QR code for the PDF version)	/
Temperature	-20℃—55℃		
Dimensions & Weight	HP 90/91/97 Series: 56(L) x 22(W) x 11(H) mm; Weight: 8g HP 95/96 Series: 47(L) x 22(W) x 11(H) mm; Weight: 7g HP 289 Series: 54(L) x 22(W) x 11(H) mm; Weight: 9g		

## 2. Overview

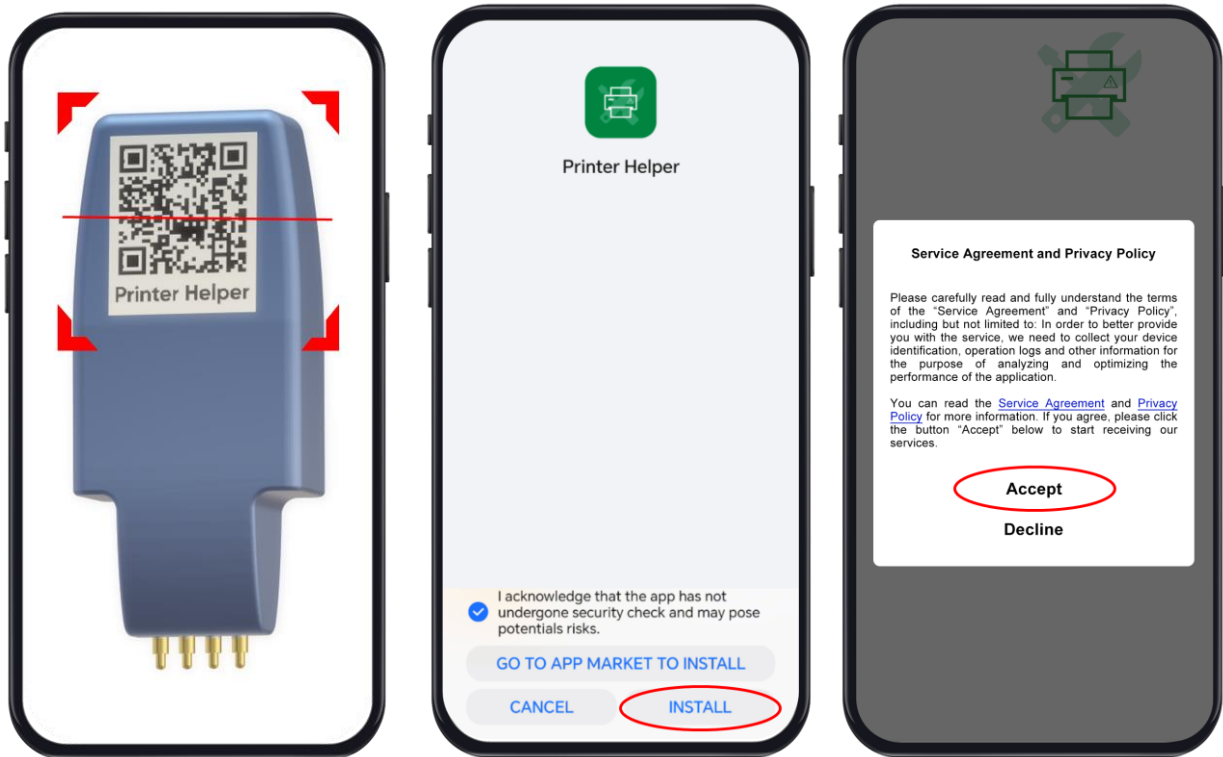
### 2.1 Device Components



### 2.2 APP Installation & Connection

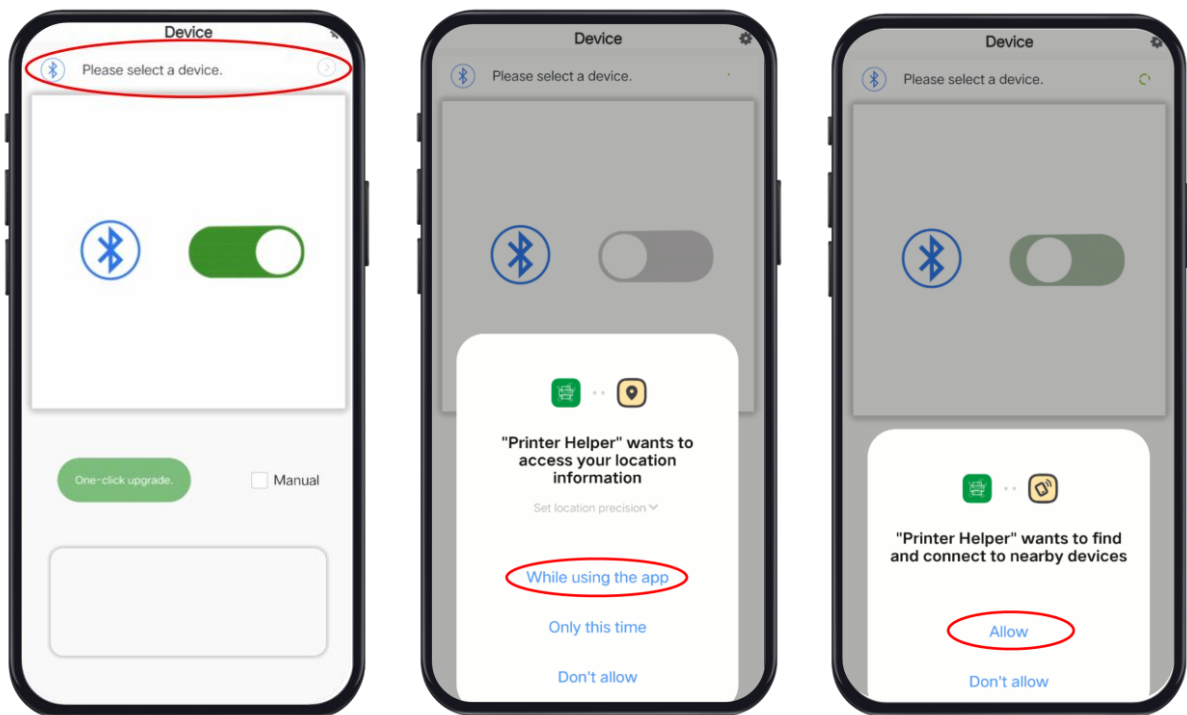
- ① Scan the QR code on the back of Unismart Mini 2 with your phone to download the appropriate app for your device.
- ② Install the app following the on-screen instructions. Open the app, agree to the Service Agreement and Privacy Policy, and proceed to the homepage.

# Unismart Mini 2 Operation Guide

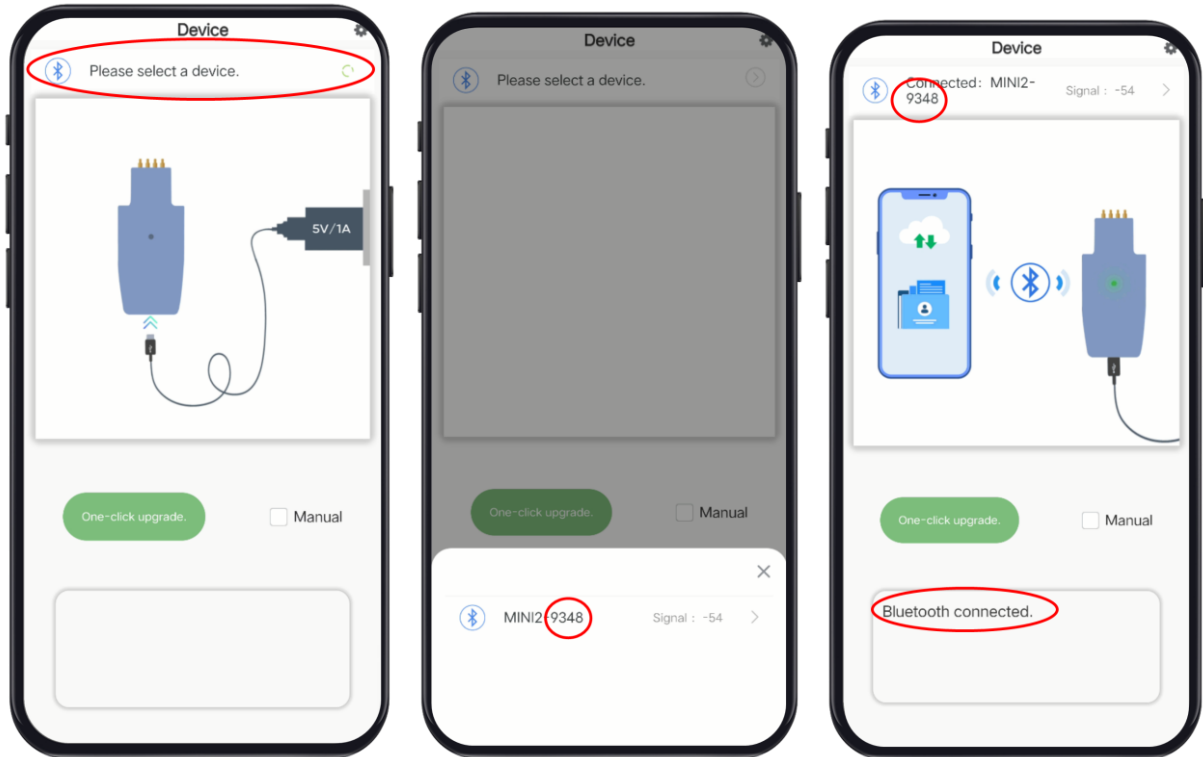


③Enable wireless connection function BT on your phone, power on Unismart Mini 2, and click "Please select a device" in the APP.

④Set the permissions for location and accessing nearby device information according to the APP prompts, connect to the Mini device ID, and confirm the connection when the green light remains on.

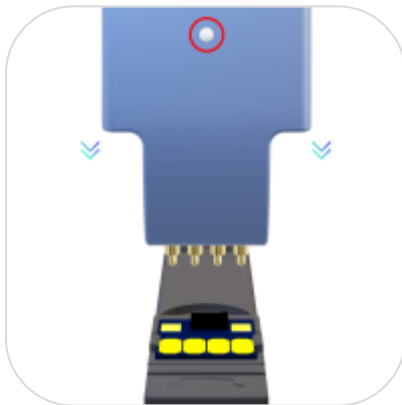


# Unismart Mini 2 Operation Guide



## 2.3 One-Click Rework Process (Chip Alignment Diagrams)

H90X/91X



Align the indicator with the four contact points.

H95X/96X



Ensure the 95x and 96x chips' contact points connect securely with the spring holder.

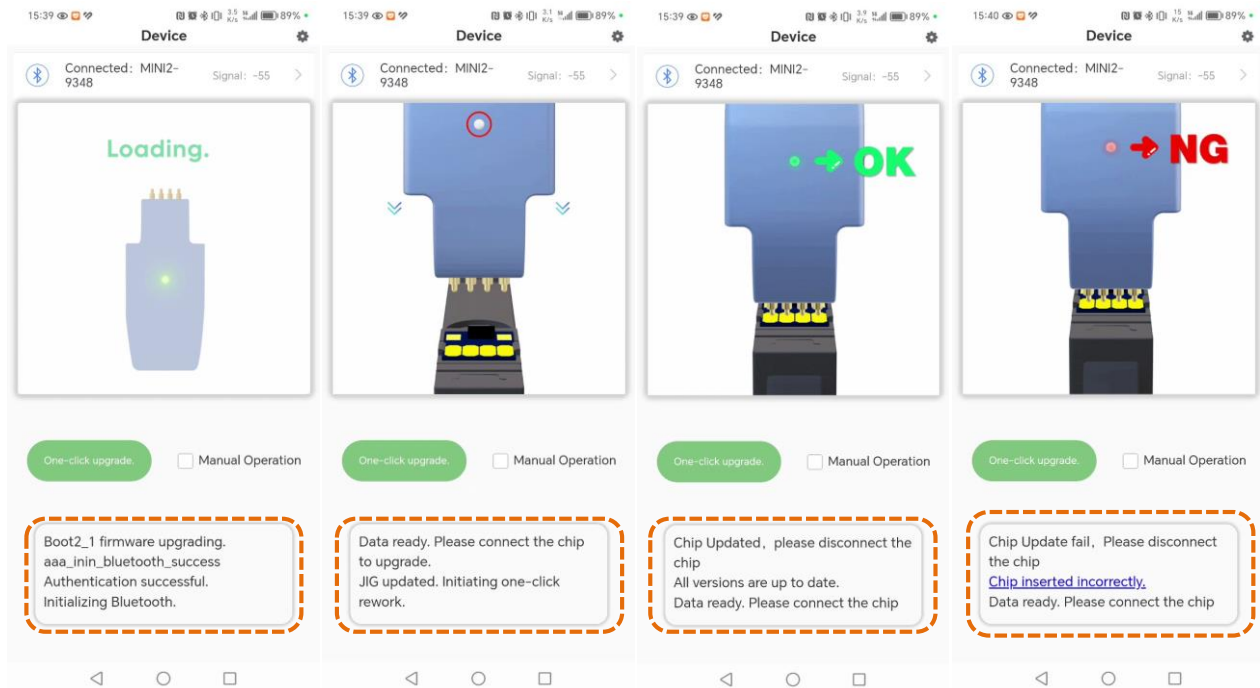
H89X



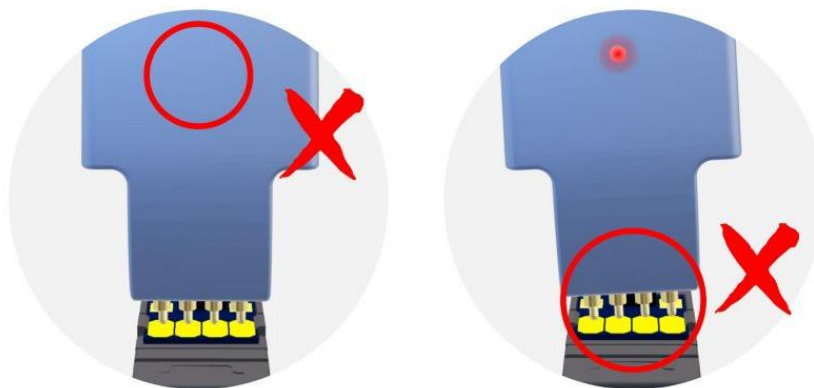
Position the indicator and the wide positioning bracket to the left of the chip's two small contact points.

# Unismart Mini 2 Operation Guide

- ①After connecting Unismart Mini 2 to the app, align the probe or spring holder according to the diagrams, ensuring full contact between the probe or spring contact and the chip's contact points.
- ②Follow the app's animation prompts and maintain contact until the upgrade is complete.
- ③Upgrade results: A continuously **green** light indicates success; a continuously **red** light indicates failure.



## ✧ Alignment Error Diagrams



**Please make sure that the side with the light is in contact with the chip.**

**Please confirm whether the contact is poor.**

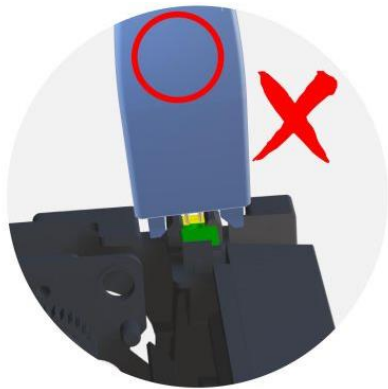
# Unismart Mini 2 Operation Guide



**Please make sure that the device is correctly installed and that the shrapnel is in contact with the chip.**



**Please make sure that the shrapnel is not damaged or stuck and that the shrapnel is in contact with the chip.**



**Please make sure that the side with the light is in contact with the chip.**



**Please confirm whether the contact is poor.**

## 3. Usage Precautions

- Firmware upgrades may vary in content and method. We will notify customers with specific details for each upgrade. Please follow our instructions carefully to ensure correct usage.
- This product is designed for upgrading chips that are not recognized after a firmware upgrade. **It is not intended for upgrading recognized stock chips.** Use the product as directed to ensure successful rework.
- Do not disassemble the product, as this may cause damage and void usability. Avoid exposing the device to liquids during use.

## 4. After-Sales Service

- For any issues encountered while using the product, please visit [www.serviceism.com](http://www.serviceism.com) and register your contact information under Technical Support -> Help Center.



## 5. Disclaimer

- Operate and use this product according to the guidelines in this manual. Improper use may result in malfunction or damage. We are not responsible for any loss or damage caused by incorrect usage.
- The product undergoes strict testing and quality control before shipment. If you encounter any quality issues, discontinue use immediately and contact after-sales support. We are not liable for damage resulting from unauthorized disassembly or modification.
- Follow all safety and operational guidelines when using this product. We are not responsible for any personal injury or property damage resulting from product use.
- This disclaimer does not affect your legal rights as a consumer. Any disputes will be governed by the courts in the jurisdiction where the product was purchased.
- We reserve the right of final interpretation for this product. If you have any questions regarding these terms, please contact us before use.

## Appendix I: Product List

Product Name	Applicable Series
Mini2-H90/91/97- Finished Product	902/903/904/905/910/912/915/972/913/973/974/975/976Y
Mini2-H95/96 - Finished Product	952/953/954/955/962/963/964/965
Mini2-H89X- Finished Product	CF258/CF259/CF276/W2020/W2030/W2040/W2110/W2210 W2310/W2410/W1340/W1350/W1360/W1380/W1390/W1450 W1480/W1490/W1510